

Proof of Training “Dump Sites”

Date:

Name of Trainee:

Company:

Operation/Department:

Training location:

Participants:

Name, first name

Signature

Trainee

Superior, for acknowledgement



Not like that!

ACCIDENT
HAZARD
POINT

Dump Sites

The location: A dump site on a pile.

The situation: The driver of a dump truck was assigned the task of dumping material on the pile. To dump his load, he backed up to the edge of the slope. The edge collapsed and the vehicle crashed, overturned and came to a rest upside down.

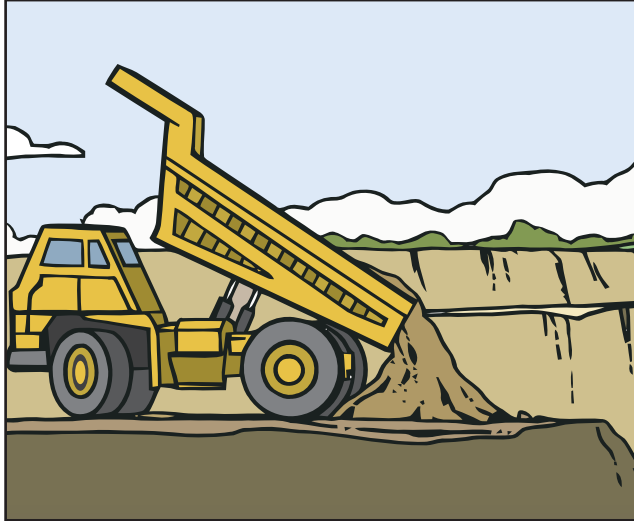
The mistake: The driver drove too close to the edge of the slope. The edge collapsed under the weight of the truck and broke away.

The consequences: Because the employee wore his seat belt, he survived the crash, albeit with multiple serious bone fractures.

Act now!



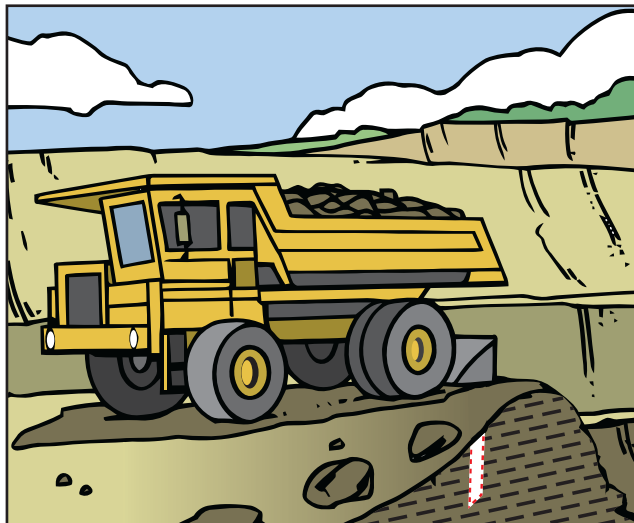
Like this!



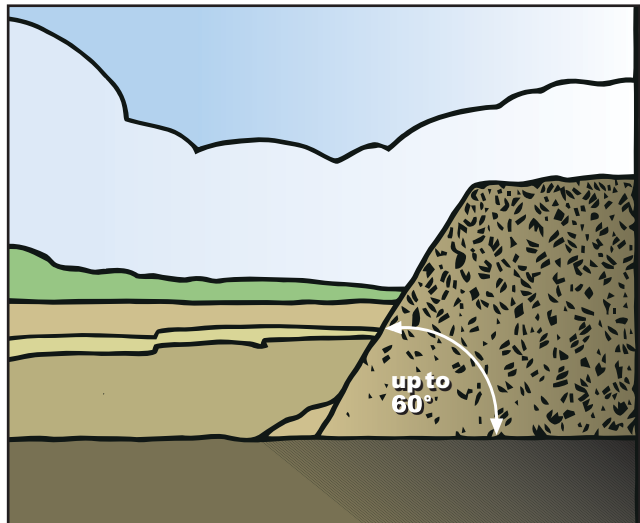
Observe a clearance of at least 5 metres to the edge of the slope to ensure the safe dumping of loads.



The dumped material must be moved by earth moving equipment – ideally by a caterpillar.



When dumping above the edge, a support device that is firmly anchored to the underground helps protect against crashes.



For piles, the slope incline may not exceed 60 degrees. Therefore check the dump site on a daily basis.

For more information:

BGR 500 “Operating work materials”, Section 2.12, No. 3.6.5
BGI 5064 “Don’t tip!”, BG Information
BGV A 1 “Prevention Principles”, Sections 3, 4, 15, 17
BGV D 29 “Vehicles”, Section 8, 43
Operational Safety Ordinance, Appendix I, 3.1.4

Practical handbook Building Materials – Stone – Earth
A 2.1 Earth moving equipment
C 21.1 Construction and operation of quarries
C 1.3 Dump sites – Unloading sites
C 1.4 Construction and operation of piles
C 2.1 Construction and operation of cut stone quarries

www.bergbau-bg.de, www.stbg.de

Please also observe the company-internal regulations.

Checklist

“Dump Sites”

In your capacity as a responsible entrepreneur/manager please ensure that the following points are covered:

Are the responsibilities re: dumping activities clearly regulated?	<input type="checkbox"/> Yes, completed/ is in place	<input type="checkbox"/> Not, will be done until by
Are dumping activities considered as part of your hazard assessment?	<input type="checkbox"/> Yes, completed/ is in place	<input type="checkbox"/> Not, will be done until by
Do you have an operating manual on dumping activities?	<input type="checkbox"/> Yes, completed/ is in place	<input type="checkbox"/> Not, will be done until by
Do you provide instructions to employees involved in dumping tasks?	<input type="checkbox"/> Yes, completed/ is in place	<input type="checkbox"/> Not, will be done until by
Do you regularly monitor dumping activities ?	<input type="checkbox"/> Yes, completed/ is in place	<input type="checkbox"/> Not, will be done until by
Do you ensure that permanent dump sites are cleaned on a regular basis?	<input type="checkbox"/> Yes, completed/ is in place	<input type="checkbox"/> Not, will be done until by
Do you ensure that dumped material is regularly moved with the suitable earth moving equipment?	<input type="checkbox"/> Yes, completed/ is in place	<input type="checkbox"/> Not, will be done until by
Do you ensure that the stability of slope edges can be guaranteed even when taking into account weather conditions?	<input type="checkbox"/> Yes, completed/ is in place	<input type="checkbox"/> Not, will be done until by
Do you ensure that your employees use their safety belts?	<input type="checkbox"/> Yes, completed/ is in place	<input type="checkbox"/> Not, will be done until by